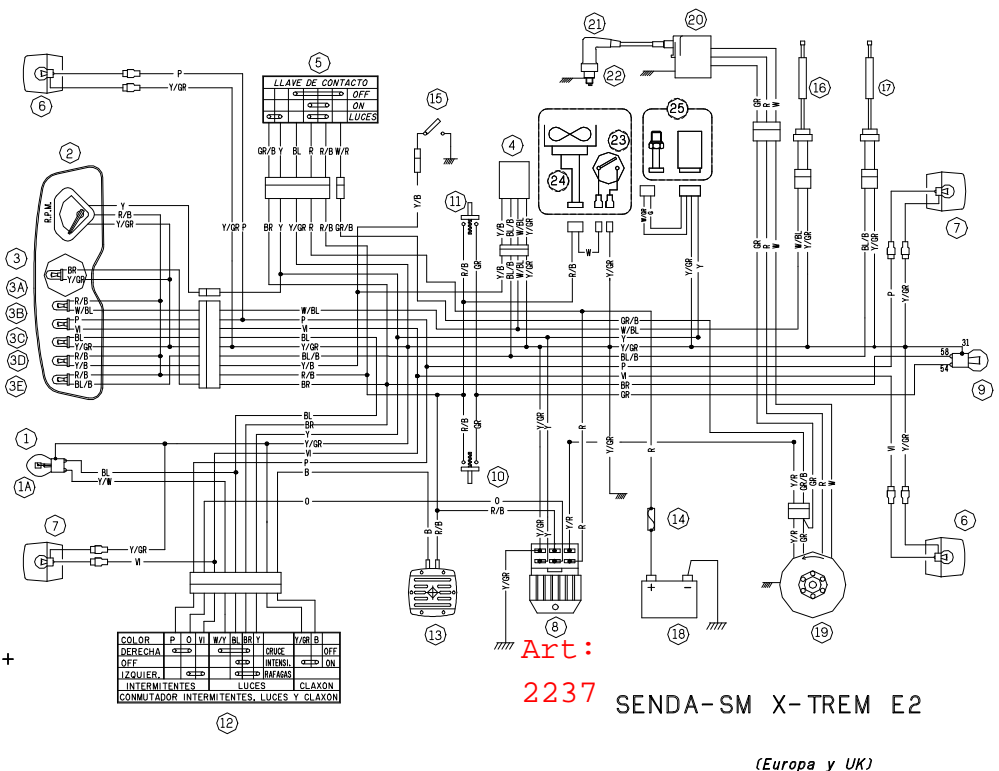


	O	GR	B	BR	W	G	Y	BL	R	P	VI
D	Orange	Grün	Schwarz	Braun	Weiß	Grau	Gelb	Blau	Rot	Rosa	Violett
F	Orange	Vert	Noir	Marron	Blanc	Gris	Jaune	Bleu	Rouge	Rosa	Violet
UK	Orange	Green	Black	Brown	White	Gray	Yellow	Blue	Red	Pink	Violet
I	Arancio	Verde	Nero	Marrone	Bianco	Grigio	Giallo	Azzurro	Rosso	Rosa	Violeta
E	Naranja	Verde	Negro	Marron	Bianco	Gris	Amarillo	Azul	Rojo	Rosa	Violeta
CAT	Taronja	Verd	Negre	Marro	Blanc	Gris	Groc	Blau	Bermell	Rosa	Violeta



Art: 2237 SENDA-SM X-TREM E2  
(Europa y UK)

UK ELECTRICAL WIRING DIAGRAM

- HEADLAMP ASSEMBLY  
1A BULB 12V 35/35W
- SPEEDOMETER
- LIGHTING BULB 12V 1.2W  
3A FUEL CONTROL PILOT LIGHT 12V 2W  
3B TURN INDICATOR CONTROL PILOT LIGHT 12V 2W  
3C HIGH BEAM CONTROL PILOT LIGHT 12V 1.2W  
3D WATER TEMPERATURE CONTROL PILOT LIGHT 12V 2W  
3E OIL RESERVE CONTROL PILOT LIGHT 12V 2W
- CHECK CONTROL TIMER
- IGNITION SWITCH
- FRONT RIGHT - REAR LEFT TURN INDICATOR INDICATOR BULB 12V 10W
- FRONT LEFT - REAR RIGHT TURN INDICATOR INDICATOR BULB 12V 10W
- TURN INDICATORS CENTRAL CONTROL 12V 10/10W+REGULATOR 12V 80W DC
- TAILLIGHT  
TAIL/STOP BULB 12V 21/5W DIN
- STOPLIGHT SWITCH  
11 STOPLIGHT SWITCH
- LIGHTS TURN INDICATORS AND HORN SWITCH
- HORN
- FUSE 7.5 Amp
- WATER TEMPERATURE THERMOSTAT
- FUEL LEVEL SENSOR
- OIL LEVEL SENSOR
- BATTERY 12V 4 AH
- ELECTRONIC MAGNETO 12V 65W
- IGNITION COIL
- SPARK PLUG COVER
- SPARK PLUG
- 23 THERMOCONTACT VENTILATOR → (OPTIONAL)
- 24 VENTILATOR → (OPTIONAL)
- 25 CARBURATOR HEATER KIT → (OPTIONAL)

ESQUEMA ELECTRICO

- FANALE ANTERIORE  
1A LAMPADA 12V 35/35W
- CRUSCOTTO
- LAMPADA ILLUMINAZIONE CRUSCOTTO 12V 1.2W  
3A LAMPADA CONTROLLO COMBUSTIBILE 12V 2W  
3B LAMPADA CONTROLLO INDICATORE DIREZIONE 12V 2W  
3C LAMPADA CONTROLLO LUCI ABBAGLIANTE 12V 1.2W  
3D LAMPADA CONTROLLO TEMPERATURA 12V 2W  
3E LAMPADA CONTROLLO OLIO 12V 2W
- TEMPORIZZATORE CHECK
- CHIAVE DI CONTATTO
- INDICATORE DIREZIONE ANTERIORE DESTRO-POSTERIORE SINISTRO LAMPADA 12V 10W
- INDICATORE DIREZIONE ANTERIORE SINISTRO-POSTERIORE DESTRO LAMPADA 12V 10W
- CENTRALINA INDICATORE DIREZIONE 12V 10/10W + REGULATORE 12V 80W DC
- FANALINO POSTERIORE  
LAMPADA STOP/SPIA 12V 21/5W
- INTERRUPTORE STOP
- INTERRUPTORE STOP
- CONMUTATORE INDICATORE DIREZIONE - LUCI - AVV. ACUSTICO
- AVVISATORE ACUSTICO
- FUSIBILE 7.5 Amp
- TERMOCONTATTO TEMPERATURA AQUA
- SENSORE COMBUSTIBILE
- SENSORE OLIO
- BATTERIA 12V 4 AH
- VOLANO MAGNETICO 12V 65W
- CONVERTISSEUR ELECTRONICO BOBINA A.T.
- CAPPUCCIO ANTIPARASITARIO
- CANDELA
- 23 TERMOCONTATTO VENTILATORE → (OPZIONALE)
- 24 VENTILATORE → (OPZIONALE)
- 25 KIT CALENTATORE CARBURATORE → (OPZIONALE)

D ELEKTROSCHEMA

- SCHEINWERFER  
1A LAMPE 12V 35/35W
- TACHOMETER
- BELEUCHTUNG 12V 1.2W  
3A KONTROLLAMPE KRAFTSTOFF 12V 2W  
3B KONTROLLAMPE BLINKGEBER 12V 2W  
3C KONTROLLAMPE FERNLICHT 12V 1.2W  
3D KONTROLLAMPE WASSERTEMPERATUR 12V 2W  
3E KONTROLLAMPE OLSTAND 12V 2W
- CHECK CONTROL
- ZUNDSCHLOSS
- KONTROLLAMPE BLINKER VORN RECHTS-HINTEN LINKS LAMPE 12V 10W
- KONTROLLAMPE BLINKER VORN LINKS-HINTEN RECHTS LAMPE 12V 10W
- BLINKGEBER 12V 10/10W + REGLER 12V 80W DC
- SCHLÜßLEUCHTE  
LAMPE SCHLÜßLICHT/BREMSLICHT 12V 21/5W
- STOPSCHALTER
- STOPSCHALTER
- UMSCHALTER F. LICHTER - BLINKGEBER - HUPE
- HUPE
- SICHERUNGSHALTERUNG MIT SICHERUNG 7.5Amp
- THERMOSTAT WASSERTEMPERATUR
- BENZINSTANDSONDE
- SONDE OLRESERVE
- BATTERIE 12V 4 AH
- LICHTMASCHINE 12V 65W
- ZUNDSPULE
- KERZEN STECKER
- ZUNDERKERZE
- THERMOSTAT
- VENTILATOR
- VERGASER HEIZKIT

F SCHEMA ELECTRIQUE

- PROJECTEUR  
1A LAMPE 12V 35/35W
- TABEAU DE COMMANDE
- LAMPE ECLAIRAGE TABLIER 12V 1.2W  
3A LAMPE CONTROLLE DE L'ESSENCE 12V 2W  
3B LAMPE CONTROLLE CLIGNOTANTS 12V 2W  
3C LAMPE CONTROLLE FEU ROUTIER 12V 1.2W  
3D LAMPE CONTROLLE TEMPERATURE EAU 12V 2W  
3E LAMPE CONTROLLE NIVEAU D'HUILE 12V 2W
- CHECK CONTROL
- SERRURE DE CONTACT ET DE FEUX
- CLIGNOTANT DROITE AVANT-GAUCHE ARRIERE LAMPE 12V 10W
- CLIGNOTANT GAUCHE AVANT-DROITE ARRIERE LAMPE 12V 10W
- VERRE DE CLIGNOTANTS 12V 10/10W + REGULATEUR 12V 80W DC
- FEU ARRIERE  
LAMPE FEU ARRIERE-ARRRET 12V 21/5W
- INTERRUPTEUR DU STOP
- INTERRUPTEUR DU STOP
- COMMUTATEUR ALLUMAGE DES PHARES CLIGNOTANTS-AVERTISSEUR (CLAXON)
- AVERTISSEUR (CLAXON)
- FUSIBLE 7.5 Amp
- THERMOSTAT TEMPERATURE EAU
- VOYANT RESERVE ESSENCE
- VOYANT RESERVE HUILE
- BATERIA 12V 4AH
- VOLANT MAGNETIQUE ELECTRONIQUE 12V 65W
- CONVERTISSEUR ELECTRONIQUE BOBINE A.T.
- PIPE DE BOUGIE ANTIPARASITEE
- BOUGIE
- 23 THERMOSTAT VENTILATEUR → (OPTIONAL)
- 24 VENTILATEUR → (OPTIONAL)
- 25 KIT PRECHAUFFAGE CARBURATEUR → (OPTIONAL)

E ESQUEMA ELECTRICO

- FARO DELANTERO  
1A LAMPARA 12V 35/35W
- CTO. TABLIER C/CUENTAREVOLUCIONES
- LAMPARA ILUMINACION c/Km. 12V 1.2W  
3A LAMPARA CONTROL RESERVA GASOLINA 12V 2W  
3B LAMPARA CONTROL INTERMITENTES 12V 2W  
3C LAMPARA CONTROL LUZ INTENSIVA 12V 1.2W  
3D LAMPARA CONTROL TEMPERATURA 12V 2W  
3E LAMPARA CONTROL RESERVA ACEITE 12V 2W
- CHECK CONTROL
- LLAVE DE CONTACTO
- FARO INTERMITENTE DELANTERO DER. Y TRASERO IZQDO. LAMPARA 12V 10W
- FARO INTERMITENTE DELANTERO IZQDO. Y TRASERO DER. LAMPARA 12V 10W
- CENTRAL INTERM. 12V 10/10W+REGULADOR 12V 80W DC
- FARO PILOTO  
LAMPARA PILOTO/STOP 12V 21/5W DIN
- INTERRUPTOR STOP
- INTERRUPTOR STOP
- CONMUTADOR LUCES-INTERMITENTES-CLAXON
- CLAXON
- FUSIBLE 7.5 Amp
- TERMOCONTACTO TEMPERATURA AGUA
- SENSOR RESERVA GASOLINA
- SENSOR RESERVA ACEITE
- BATERIA 12V 4 AH
- VOLANTE MAGNETICO 12V 65W
- BOBINA CONVERTSOR ELECTRONICO
- PIPA ANTIPARASITARIA
- BUJIA
- 23 THERMOSTATO VENTILADOR → (OPCIONAL)
- 24 VENTILADOR → (OPCIONAL)
- 25 KIT CALENTADOR CARBURADOR → (OPCIONAL)

CAT ESQUEMA ELECTRIC

- FAR DAVANTER  
1A BOMBETA 12V 35/35W
- CONJUNT TABLIER AMB CONTAVOLTAS
- BOMBETA IL-LUMINACIO c/Km. 12V 1.2W  
3A BOMBETA CONTROL RESERVA BENZINA 12V 2W  
3B BOMBETA CONTROL INTERMITENTS 12V 2W  
3C BOMBETA CONTROL LLUM INTENSIVA 12V 1.2W  
3D BOMBETA CONTROL TEMPERATURA 12V 2W  
3E BOMBETA CONTROL RESERVA OLI 12V 2W
- CHECK CONTROL
- CLAU DE CONTACTE
- FAR INTERMITENTE DAVANTER DRET I TRASER ESQUER BOMBETA 12V 10W
- FAR INTERMITENTE DAVANTER ESQUER I TRASER DRET BOMBETA 12V 10W
- CENTRAL INTERM. 12V 10/10W+REGULADOR 12V 80W DC
- FAR PILOT  
BOMBETA PILOT/STOP 12V 21/5W DIN
- INTERRUPTOR STOP
- INTERRUPTOR STOP
- CONMUTADOR LLUMS-INTERMITENTS-CLAXON
- CLAXON
- FUSIBLE 7.5 Amp
- TERMOCONTACTE TEMPERATURA AIGUA
- SENSOR RESERVA BENZINA
- SENSOR RESERVA OLI
- BATERIA 12V 4 AH
- VOLANT MAGNETIC 12V 65W
- BOBINA CONVERTSOR ELECTRONIC
- PIPA ANTIPARASITARIA
- BUGIA
- 23 THERMOSTAT VENTILADOR → (OPCIONAL)
- 24 VENTILADOR → (OPCIONAL)
- 25 KIT ESCALFAMENT CARBURADOR → (OPCIONAL)